

TTS

www.ttsurveys.com

T. T. Surveys Ltd. *Seismic Equipment Hire and Operation*

TTS— DGPS Tailbuoy/Headbuoy/Source Position

Contact Details:

TTS Head Office **(for all enquiries):**

TOM DANIELS

Wheatfields

Trevone Bay

Padstow Cornwall

United Kingdom.

Tel: +44 (0) 1841520427

ttsoffice@aol.com

TTS Singapore

SEAN DANIELS

Loyang Offshore Supply Base

Blk 302, TOPS Ave 1, #01-10

Box 5043

508988

Singapore.

Sean.Daniels@ttseng.co.uk

UK Workshop

ALISTAIR DANIELS

Unit 3B

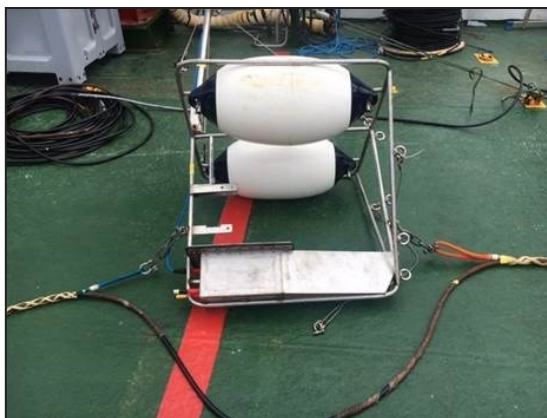
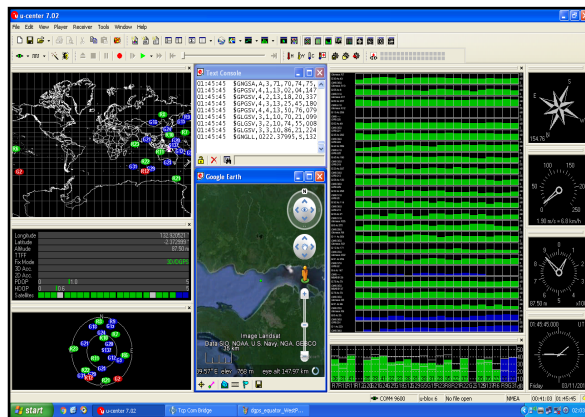
Trecrus Ind. Estate

Padstow Cornwall

United Kingdom

PL28 8RW

Alistair.Daniels@ttseng.co.uk



System Specification

Total GPS:	Max 16 Operational Units
Corrected Strings:	24 x Strings NMEA GGA available over network or serial output
Accuracy:	1m DGPS Float Mode 4hz update
Range:	3km Full line of sight
Transmission:	Radio Transmission, Frequency Adjustable
Power:	12VDC System with 0.1amp constant current.
Charge Supply:	Ampair Impellor (optional) with 33AH Battery External Charger for when onboard
Battery Life:	14 days without charge supply
Initiator:	Subcon System Initiator
GUI:	Full GPS diagnosis and reset Controller Software License Free. Real time Satellite connection location signal strength and verification monitoring.
Weight:	30kgs suitable for hand deployment



For more details on TTS equipment supply visit: www.ttsurveys.com